

NON-PROFIT ORG
US POSTAGE
PAID
PERMIT NO 56
DENVER CO



Changing Women's Lives
where a woman earns her future

Women's Bean Project • 3201 Curtis Street • Denver, CO 80205 • Toll free 1.888.292.3001
Fax 303.292.1221 • E-mail info@womensbeanproject.com • www.womensbeanproject.com



WOMEN'S BEAN PROJECT

2014-2015 PRODUCT CATALOG



women's
BEAN PROJECT
where a woman earns her future

A note from our CEO, Tamra Ryan

Dear Friends,

Women's Bean Project is 25!

We are excited to be celebrating our 25th anniversary this year. In 1989 Jossy Eyre founded Women's Bean Project (WBP) as a result of her volunteer work at a day shelter for homeless women. She saw that while the shelter kept women safe, it couldn't help them make lasting changes in their lives. So Jossy bought \$500 worth of beans and put two homeless women to work - the first step in building the social enterprise we are today.

Over the years sales and support for the Bean Project has grown. Today we are a more than \$2 million operation; we sell products in over 500 stores in 40 states and have drop-ship relationships with some of the US's largest retailers. What I am most proud of, though, is that the overarching purpose of the Bean Project - to provide a transitional job as a stepping stone to self-sufficiency - has remained constant.

As I write this letter a new group of women has just been hired and is being trained as we gear up for the busy season. Each time we hire a new group of women I am struck by the fear and the hope I see in each person. Every woman who is hired at the Bean Project must commit to changing her life, to overcoming the fear and focusing on the hope. Every day she must wake up and decide to come to work, do her best and keep a good attitude. Every day, as she works through the program, she has to face her past failures and commit to creating a new life, both personally and professionally. For many of the women, every day they must commit to remaining clean and sober and building their lives.

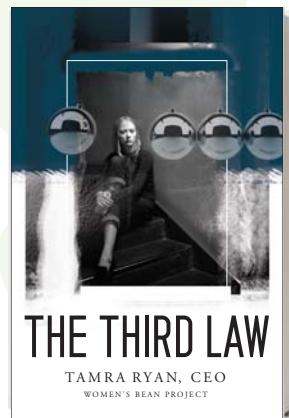
Though I wish it were not the case, there will always be chronically unemployed women, systems that work against them, and opinions and attitudes that undermine their success. But if we can continue to grow our businesses to employ more women and ensure that each woman who graduates our program receives services that are so effective and far-reaching that she is the last in her family to need us, then we will be doing our part. And perhaps, 25 years from now, we will look back and see that the ripple effect created has touched - and improved - thousands of lives.

Thank you for your support. We look forward to continuing the journey with you.

Warmly,



Tamra Ryan, CEO



The Third Law - #BOOK01 \$14.95

Table of Contents

Stay connected with friends and family. Keep client ties strong. Choose from any of our popular selection of gourmet soups, baking, salsa and dip mixes, gift bundles and baskets, limited-edition handcrafted jewelry and more. Gift packaging available.

Corporate Gift Giving	3
Get Involved	3
Premium Gift Baskets	4
Gift Bundles	6
Individual Soups	8
Baking Mixes	10
Salsa Mixes	12
Spice Rubs	13
Dip Mixes	13
Organic Fair Trade Coffees and Instant Tea Mixes	14
Sweet Beans	15
Lovingly Handmade Jewelry	17
Women's Bean Project Novelties	28
How to order	29
How to contact	29

where a woman earns her future

Success in our world requires basic skills that many of us simply take for granted: Soft skills such as goal setting, work ethic, self-confidence, adaptability, communication, time management, positive attitude and budgeting. Job skills such as reliable attendance, teamwork, conflict resolution, problem solving, attention to detail and meeting objectives. But for many in our community these skills might as well be in a foreign language.

Over the past 25 years Women's Bean Project has helped more than 800 chronically unemployed and impoverished women acquire these essential skills and acquire gainful employment. During nine months in our program, each woman moves out of dependency and into personal responsibility. Through her own hard work, she earns her future that has a direct and positive impact on her family and our entire community.

Based on research conducted by economists, the net value of a job created by social businesses such as Women's Bean Project is at least \$80,000 per year.

As a social enterprise Women's Bean Project provides women transitional employment in gourmet food and handcrafted jewelry manufacturing. During their employment the women gain basic job readiness, interpersonal and life skills needed to get and keep a job. They receive immediate income and support services designed to overcome barriers to employment. And they begin to feel they are worthy of a better life and to have a job where they are a valued contributor.

Our program works.

- ☛ Transitional jobs help low-income people with barriers to employment to enter the workforce, avoid re-incarceration, and reduce their reliance on public benefits.
- ☛ Transitional job programs strengthen communities through the dividends returned from the investment in workers.
- ☛ Transitional job programs help employers meet their goals for hiring reliable and dependable workers.
- ☛ Transitional job programs can yield significant cost savings for communities.

The women make it and America buys it.

During their time at the Women's Bean Project the women make gourmet mixes for bean soup, chili, salsa, dips, spice rubs, cookies, brownies, cornbread, handcrafted jewelry, gift baskets, gift bundles and more. The products are sold through more than 500 stores nationwide, some of the country's largest online retailers such as Walmart.com, Amazon.com and Overstock.com and online or by stopping at Women's Bean Project.

You can help women earn their future and create a better community and economy.

Numerous businesses purchase our gift baskets and bundles to give as a thank you to their clients, strengthening customer loyalty and retention. Families and friends give Women's Bean Project items during the holidays or at other special times as a way to stay close to loved ones.

Learn more at womensbeanproject.com.

Get Involved

Beanstalk

THE NEWSLETTER OF THE WOMEN'S BEAN PROJECT

Want to keep posted with the latest Bean news and happenings? We'll send you our Beanstalk newsletter three times a year where you'll learn more about the women who are presently in the program, new products, project initiatives, volunteer and donor news, recipes and more.

We also post each issue on our website, so if you wish to receive an electronic version, give us a call at 303.292.1919 ext.114, or e-mail us at newsletter@womensbeanproject.com.



Beans Talk Tours

Engage with us

The first Friday of each month we host our Beans Talk Tours at Women's Bean Project at 3201 Curtis Street in Denver. Bring your friends or colleagues and see the women at work and join us for lunch. Great for book clubs, social groups, neighborhood gatherings or employee team building. RSVP to tours@womensbeanproject.com or call 303.292.1919 ext.113.

For groups of 10 or more we can also bring an interactive and interesting program about Women's Bean Project to your group or workplace.

Contact tours@womensbeanproject.com to make arrangements.

Bean Parties

Empowering lives one party at a time

Hosting a Bean Party allows Women's Bean Project to create stepping stones to self-sufficiency for women who are chronically unemployed and impoverished.

Enrich a woman's life by hosting your next book club meeting, sports fiesta, office open house, or girlfriend gathering with Women's Bean Project's gourmet food and handcrafted jewelry. Invite family, friends, clients and coworkers to experience Women's Bean Project firsthand in your home, business or organization. It's an easy and fun way to make a difference for the women, their families, our community and our economy.

Bring your party to work, BBQ's, family reunions and other gatherings. We'll make it simple and easy for you with different party themes, recipes, party information kit, online ordering, and everything else you need to have a great party. To find out more about our Bean Parties, contact us at 303.292.1919 ext. 107 or email: beanparty@womensbeanproject.com.



"Using corporate and promotional gifts from Women's Bean Project has a triple bottom line effect. We provide a delicious treat our clients enjoy, demonstrate our genuine appreciation for a community partner, and support the ongoing success of an important social enterprise that is changing lives."

Todd Munson, President
JPMorgan Chase in Colorado

Corporate Gift Giving

Numerous businesses purchase our gift baskets to give as a thank you to their clients, strengthening customer loyalty and retention. Families and friends give Women's Bean Project items during the holidays or at other special times as a way to stay close with loved ones. Send to clients, acknowledge employee contributions, thank your vendors, or transform your next event. Each gift says thank you and creates an impact on others. Your recipient will get a thoughtful gift and you'll benefit by showing that you care about changing women's lives.

We offer a variety of options for your conference, golf tournament, wedding or corporate event. Give out as awards, prizes, or display as centerpieces.

For more information about Corporate Gifts contact us at gifts@womensbeanproject.com or call 303.292.1919 ext.107.

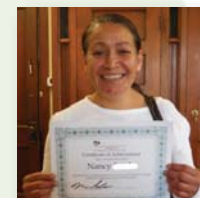
Donate

We believe in providing opportunity, service, transformation, empowerment and sustainability, and your support helps us build stepping stones to self-sufficiency so that women can create a new future – for themselves, their families, our community and our economy. Women's Bean Project could not function without many forms of community support. While our business provides the training for the Program Participants, sales revenues cover approximately 70% of our total operating expenses. Generous contributions of time, products, services and money allow us to offer the comprehensive and effective programming that sets Women's Bean Project apart from other transitional employment training programs.

Your partnership in our future will help us implement our plans to grow and employ more women in need. By supporting the Bean Project with your charitable contribution, you are giving the promise of a brighter future to women and their families.

Volunteer

Over the last 25 years, the service from people who generously give their time and talent supports much of our work and dedication to our mission. Volunteer opportunities include representing the Bean at community events, teaching life skills, helping to develop wholesale partnerships, or working within different departments such as production, development, sales, marketing or administrative. No matter where you live, you can impact the lives of our Program Participants, their families and the community as a whole. Call or email us for our current volunteer needs. 303.292.1919 ext. 113 or volunteer@womensbeanproject.com.



"Finding a job was starting to get really difficult. I had been out of work for such a long time. I needed a chance for a new life, but nobody was giving me the opportunity. I was financially broke, my confidence was lacking and in general I was really struggling. Thanks to the Bean Project - I have been employed with the same job for over a year since graduating, received a few promotions and love my job in the hospitality industry!"

Nancy

Premium Gift Baskets

Our premium gift baskets are lovingly handmade with attention to detail by our Program Participants and filled with a variety of gourmet food and specialty items uniquely displayed in a sturdy chocolate-colored market tray, wrapped in cellophane and topped with a handcrafted decorative bow. The reusable tray is great for repurposing and makes great décor or storage for crafts, toys, magazines, electronics and more! Perfect for any occasion that calls for something special. Choose one of our premium gift baskets or customize your own with any of our products based on quantities.

Custom or large orders can be made by contacting gifts@womensbeanproject.com.



Small Gourmet Basket – Eclectic sampling of gourmet mixes and Fair Trade Coffee. Green Chili Salsa Mix, Southwest Salsa Mix, Golden Cornbread Mix, Firehouse #10 Hot Chili Mix, Toni's 10 Bean Soup Mix, and sample sizes of each of our Fair Trade Organic Coffees: Friend's Blend, Ooh La La! French Roast and Mellow Bean Decaf. **#BASK01 \$38.00**



Medium Gourmet Basket – Beautiful array of gourmet delicacies sure to please any palate. Southwest Salsa Mix, Medium Original Salsa Mix, Malaysian Spice Rub, Dillicious Dill Dip Mix, Toni's 10 Bean Soup Mix, Giada DiLaurentiis Lentil Soup Mix, Golden Cornbread Mix, and Chocolate Chip Oatmeal Cookie Mix. **#BASK02 \$45.00**



Large Gourmet Gift Basket – Filled to the brim with an impressive assortment of decadent and delicious gourmet products. Toni's 10 Bean Soup Mix, Sarah's Spicy Split Pea Soup Mix, Old Fashioned Chili Mix, Marian's Black Bean Soup Mix, Firehouse #10 Chili Mix, Giada DiLaurentiis Lentil Soup Mix, Cindy's Sinfully Chocolate Brownie Mix, Golden Cornbread Mix, and Grammy's Snickerdoodle Cookie Mix. **#BASK03 \$59.00**



Chocolate Lovers Gift Basket – A diverse collection of chocolate treats brimming with delicious tea. Cindy's Sinfully Chocolate Brownie Mix, Chocolate Chip Oatmeal Cookie Mix, Chocolate Covered Espresso Beans, 4 oz. Dark Chocolate Raspberry Jewels, 4 oz. Dark Chocolate Covered Mints, and Raspberry Lemongrass Tea Mix. **#BASK08 \$39.00**

Because BASK08 contains chocolate, it is more likely to melt in transit due to warm temperatures in summer. Customer assumes the risk if chocolate melts during transit.



"Prior to Women's Bean Project, one of my daughters committed suicide. I was angry and needed to stay busy so I didn't dwell on the loss of my daughter. I had seen Women's Bean Project products in the grocery store and one day shortly after my daughters' death, I was driving by and decided to stop and apply. I have changed a lot since working at the Bean

Project. I'm calm now and have learned how to let my anger go. I'm motivated, determined and have found friendship and strength – and a job with great benefits that I love." Barbara



Mission Wear Specialty Gift Bag – Socially responsible gourmet food collection. Created in partnership with our friends at Mission Wear (www.themissionwear.org), this unique reusable shopping bag gift basket is made from a burlap coffee bag and filled with: Toni's 10 Bean Soup Mix, Firehouse #10 Hot Chili Mix, Green Chili Salsa Mix, Dillicious Dill Dip Mix, Golden Cornbread Mix and Cindy's Sinfully Chocolate Brownie Mix. Similar to Women's Bean Project, Mission Wear provides a place for women in recovery who need the opportunity to build their confidence and work history. **#BASK17 \$55.00**



Coffee Klatsch Gift Basket – A great collection of hand-painted ceramic mugs, Fair Trade Coffee and accompanying treats. Two Lovingly Hand-Painted Ceramic Mugs (by our Program Participants), 12 oz. Bag of Whole Bean Fair Trade Organic Friend's Blend Coffee, and Chocolate Chip Oatmeal Cookie Mix. **#BASK18 \$35.00**



Tea for Two Gift Basket – Pairing delicious origin tea with complimenting treats. Two Lovingly Hand-Painted Ceramic Mugs (by our Program Participants), The Denver Tea Room Cream Scone Mix, Ceylon Pearl Chai Black Tea, and a 4 oz. Jar of Seedless Raspberry Preserves. **#BASK19 \$39.00**



NEW **Gluten Free Gift Basket – A delicious selection of gourmet gluten free products.** Lisa T's Gluten Free Cornbread Mix, Giada DeLaurentiis Lentil Soup Mix, Sarah's Spicy Split Pea Soup Mix, Green Chili Salsa Mix, Dillicious Dill Dip Mix and Malaysian Spice Rub. **#BASK22 \$35.00**

Gift Bundles

We have affordable, delicious, and savory gourmet food combinations that make great appreciation gifts for employees, customers, vendors, real estate or mortgage brokers, graduates, hostesses, teachers, officemates and more! Give a gift with purpose and hope to that special someone in your life.

Each bundle is creatively handcrafted and packaged with attention to detail in a Kraft paper box; shrink wrapped and tied with our signature Bean Project ribbon. Inquire about co-branding and personalizing the bundles by contacting gifts@womensbeanproject.com.



Two Chili and Cornbread Bundle – Chili Lover's Delight. Firehouse #10 Chili Mix, Old Fashioned Mild Chili Mix and Golden Cornbread Mix. **#BUN01 \$17.95**



Two Chili and Salsa Bundle – Add a Little Zest. Firehouse #10 Chili Mix, Old Fashioned Mild Chili Mix, Southwest Salsa Mix and Original Medium Salsa Mix. **#BUN02 \$21.95**



Cookie Bundle – Decadent Cookies. Oatmeal Chocolate Chip Cookie Mix and Grammy's Snickerdoodle Cookie Mix. **#BUN12 \$13.95**



One Soup and Cornbread Bundle – Meal Made Simple. Toni's 10 Bean Soup Mix and Golden Cornbread Mix. **#BUN13 \$11.95**



Two Soup and Cornbread Bundle – Comforting Your Soul. Toni's 10 Bean Soup, Giada DeLaurentiis Lentil Soup Mix and Golden Cornbread Mix. **#BUN25 \$17.95**



Three Soup Bundle – Variety of Delicious Flavor. Toni's 10 Bean Soup Mix, Firehouse #10 Chili Mix and Marian's Black Bean Soup Mix. **#BUN07 \$19.95**



Firehouse Chili and Cornbread Bundle – Spice Up Your Night. Firehouse #10 Chili Mix and Golden Cornbread Mix. **#BUN14 \$11.95**



Old Fashioned Chili and Cornbread Bundle – A Kinder, Gentler Chili Night. Old Fashioned Mild Chili Mix and Golden Cornbread Mix. **#BUN15 \$11.95**



Three Dip Bundle – Versatile Dip Medley. PJ's Smoky Tomato, Dillicious Dill, and Garlic & Herb Dip Mixes. **#BUN08 \$13.95**



Six Soup Bundle – Diverse Collection All Stacked Up. Toni's 10 Bean, Marian's Black Bean, Sarah's Spicy Split Pea, Giada DeLaurentiis Lentil Soup, Old Fashioned Mild Chili, Firehouse #10 Chili Mixes. **#BUN10 \$37.95**



Sweetheart Bundle – Treats and Sweets. Chocolate Covered Espresso Beans, Mixed Jelly Beans, and Cindy's Sinfully Chocolate Brownie Mix. **#BUN11 \$17.95**



Gluten Free Bundle – The Perfect Duo Lisa T's Gluten Free Cornbread Mix and Giada DeLaurentiis Lentil Soup Mix. **#BUN19 \$12.95**

NEW



Spice Sampler Bundle – Add a spice of life. Original Hot Salsa Mix, Dillicious Dill Dip and Uncle Bob's BBQ Spice Rub. **#BUN27 \$13.95**



Tea Time Bundle – The Serene and Beautiful Indulgence of Teatime. The Denver Tea Room Cream Scone Mix and Chai Flavored Black Tea. **#BUN24 \$14.95**

Because BUN11 contains chocolate, it is more likely to melt in transit due to warm temperatures in summer. Customer assumes the risk if chocolate melts during transit.

Soups & Chilis

Nourishment

Soup, what a perfect foundation for Women's Bean Project. Soup connotes nourishment and warmth and a sense of home. That is exactly the environment we try to create for the women who come to the Bean Project to transform their lives; a safe and accepting work environment that fosters growth, sustainability, and nurtures a better future.

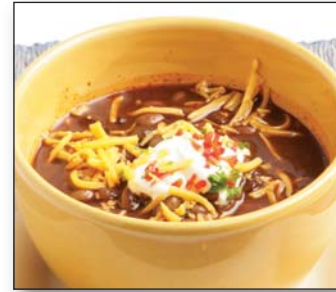


Marian's Black Bean Soup [K]
A classic, simple soup. Our black beans deliver an earthy soup that's both delicious and nutritious. While it's cooking, the black bean's hardy shell holds its shape and its rich inside cooks to a velvety mushroom taste. **#SOU02 \$5.95**



Sarah's Spicy Split Pea Soup [K]
As flavorful and fragrant as the name suggests. The unique blend of curry and coriander spice up this otherwise sweet and creamy soup. Healthy too – rich in fiber, iron and protein, as well as being low in fat. The humble pea never fails to please the palate. **#SOU03 \$5.95**

Toni's 10 Bean Soup [K]
Enjoy the rich collective blend that will build community at every gathering. Close your eyes, take a deep breath and envision the closest, most collaborative gathering possible. You'll imagine it's a soup with 1,000 beans, not just 10. A hint of spice gives it the rich flavor, and you're invited to add meat and vegetables. There's a spoonful of community with every serving. Contains Barley. **#SOU01 \$5.95**



Old Fashioned Mild Chili [K]
Everything old is new. You'll love the comfortable, homey flavor of this red bean chili. Mildly spiced with cumin and chili pepper, it tastes even more like home when served with our Golden Cornbread. **#SOU04 \$5.95**

Firehouse #10 Chili [K]
Our flavorful combination of chipotle and crushed red pepper three-bean chili is perfectly named for our building, the old Denver Fire Department Firehouse #10. **#SOU05 \$5.95**



Giada DeLaurentiis Lentil Soup [K]
Named after the Food Network television chef, this combination of Italian spices and herbs surprise your palate and rounds out our soup offerings. Mangia! **#SOU07 \$5.95**

All of our soups are gluten-free EXCEPT Toni's 10 Bean Soup, which contains barley. They are made with ingredients that are naturally gluten-free, but are not produced in a gluten-free facility. All Women's Bean Project's products are certified Kosher by Scroll K and are designated with a [K], EXCEPT our coffees and four salsa mixes. [KD] is Kosher/Dairy certified.



Baking Mixes

Complement your meal or create a special occasion any time. All of our baking mixes are easy to make and delicious. Make them as instructed or add your own twist of ingredients to customize.

Golden Cornbread [K]

It's the perfect way to make our soups and chilis taste even more perfect. In fact, many of our customers say hands down, it's their favorite cornbread. Maybe it's the down-home Southern flavor we've mixed in, or the fact they choose to make it their own by adding green chiles, corn or a touch of sugar. Makes a 9x9 baking pan. **#MIX01 \$3.95**



Chocolate Chip Oatmeal Cookies [KD]

Not your grandma's chocolate chip cookies! We've added a twist to the classic – oatmeal. Enjoy the best of both cookies' flavors in one delicious bite. Makes approximately 24 cookies. **#MIX04 \$5.95**



Lisa T's Gluten-Free Cornbread [K]

Our newest addition to our baking ensemble is gluten-free cornbread and is definitely a new customer favorite. Made in a gluten-free environment. Makes a 9x9 baking pan. **#MIX07 \$4.95**



Cindy's Sinfully Chocolate Brownies [K]

Hard to beat, customers rate this brownie mix as a favorite. We encourage you to make it your favorite by enhancing our mix with your own special additions. Let yourself go. We've had them frosted, with nuts on top or inside, and even with raspberry preserves baked in. Yum! Makes a 9x9 baking pan that will disappear fast. **#MIX05 \$5.95**



Grammy's Snickerdoodle Cookies [K]

We stuck with the tried and true. This classic old-fashioned cookie still has the same rich cinnamon-sugar coating that'll make you think your back at your grandmother's house. You just provide your own glass of milk! Makes approximately 30 cookies. **#MIX06 \$5.95**



The Denver Tea Room Cream Scones [K]

In our search to find the perfect scones, we tried quite a few that didn't make the cut. That's why we partnered with The Denver Tea Room to offer these truly delicious cream scones. Our mix makes it super easy to create scones that will be the life of your next brunch. Makes approximately 12 scones. **#MIX08 \$5.95**



"Before Women's Bean Project I was lost. I was recently divorced, homeless with 2 children, had language barriers, and looking for employment. We were living in a shelter and just trying to survive. I stopped at a gas station for a job and the woman there told me about the Bean Project. Since Women's Bean Project, our lives are coming together - I have confidence and can provide food and rent for my family. We finally have independence. The classes have provided me with organization, budgeting, communication and time management skills and the staff is there for you. They want each of us to succeed. I now believe I have a great future. There is hope." **Theresita**



Salsa Mixes

Mix it up. Make it your own. All our salsa spice mixes work great with tomatoes, guacamole, or as a taco or fajita marinade.

We encourage you to go where your salsa leads you – mix our spices into sour cream or with your other favorite ingredients such as black beans, corn or green chiles – whatever makes great dipping sense to you. Be sure to check out the recipes on our packages for all the additional ways you can use our salsa to make your new favorite dishes.

Southwest Salsa Mix (Medium spiciness)

With just a touch of cilantro, roll inside flour tortillas or spread with cream cheese and salsa. Add to fajitas, beef brisket, tacos, and eggs for additional flavor and taste. **#SAL01 \$3.95**

Green Chili Salsa Mix (Medium spiciness)

Our original smooth green chili version. Serve it over omelets, enchiladas or blend with sour cream as a dip for chips. Also great as cornbread stuffing. **#SAL02 \$3.95**

Original Salsa Mix (Medium spiciness)

Include canned or fresh tomatoes to make it super flavorful. Spice up your tacos or chicken or beef fajitas for some added zest. **#SAL03 \$3.95**

Original Salsa Mix (Hot spiciness)

This hot version spices up chips, dips, eggs, tacos, and your favorite fajitas. Slice up some lime to hang on the side. **#SAL04 \$3.95**



Spice Rubs

If variety is the spice of life, these rubs provide it all. Some customers use the Malaysian Rub to create tasty, intriguing tasting pork loin. And for others their favorite is to use Uncle Bob's BBQ Rub on their ribs. On meat, vegetables – any way you use our rubs, you'll love them.

Uncle Bob's BBQ Spice Rub [K]

Add the traditional tastes of a simmering Southwest barbeque. Great for grilling, baking or pan roasting on beef, chicken or fish. **#RUB01 \$3.95**

Malaysian Spice Rub [K]

This rub will take you around the world in a flash. The striking blend of spices will give your meat and vegetables an exotic flavor. You'll find it perfect for your pork, chicken or grilled vegetable dishes. **#RUB02 \$3.95**



Dip Mixes

Our versatile mixes are a favorite to use as dips for chips, crackers, and fresh vegetables or to season grilled meat, or spread onto a toasted bagel. You choose – mix them with mayonnaise, sour cream, yogurt or cream cheese. Or use them to infuse butter. Let your imagination lead your appetite.

Dillicious Dill Dip Mix [K]

Blend with sour cream as a dip for your fresh vegetables. Or infuse with butter to complement your favorite fish dish. **#DIP04 \$3.95**

PJ's Smoky Tomato Dip Mix [K]

Added paprika gives it a delightful smoky flavor and chipotle gives it a little kick. Great as a dip or spread for crackers or bagels. However you imagine it, you'll love it. **#DIP05 \$3.95**

Garlic and Herb Dip Mix [K] You'll taste the rolling hills of Tuscany in every bite of this delicious blend of Tuscan spices. You choose – it adds flavor to crudités or any of your favorite crackers or chips. **#DIP06 \$3.95**



Instant Tea Mixes

Perk up your day by the glass or by the pitcher. Either way, you and your company will enjoy a sweet, refreshing beverage.

Mango Peach Tea Mix [K]

This perfect refreshing combination makes our green tea mix one of a kind. Each package makes one gallon of tea. 6 oz. package. #TEA01 \$3.95

Raspberry Lemongrass Tea Mix [K]

We've added a hint of lemon to this sweet raspberry black tea. You and your guests will find it a stimulating choice. Each package makes one gallon of tea.

6 oz. package. #TEA02 \$3.95



Organic Fair Trade Coffees

The United States consumes one-fifth of all the world's coffee, making it the largest consumer in the world. But few Americans realize that agriculture workers in the coffee industry receive prices for their coffee that are less than the costs of production, forcing them into a cycle of poverty and debt. Our organic fair trade coffees deliver for the producers and for you. Perfect blends, perfect taste.

Friend's Blend

You'll wake up with a friend in this smooth blend that includes hints of brown sugar and citrus spice. 100% USDA Organic Fair Trade certified. Whole beans packaged in a 12 oz. sealed bag. #COF01 \$11.95

Ooh La La! French Roast

You'll sit and sip by the banks of La Seine as you linger over this rich, creamy, flavorful coffee with subtle floral notes and hints of pear. 100% USDA Organic Fair Trade certified. Whole beans packaged in a 12 oz. sealed bag.

#COF02 \$11.95

Mellow Bean Decaf

Relax anytime day or night with this rich, full-flavored decaf. 100% USDA Organic Fair Trade certified. Whole beans packaged in a 12 oz. sealed bag.

#COF03 \$11.95



Sweet Beans

Reward yourself. Indulge.

Mixed Jelly Beans [K]

Sweet, chewy beans in a variety of tasty, traditional flavors. Keep 'em on your desk and sneak your favorites anytime. Nice delight to satisfy any sweet tooth.

#SWT01 \$3.95

Chocolate Covered Espresso Beans [KD]

Great bite-sized pick-me-up anytime of the day. Rich, sweet dark chocolate smothered espresso-roasted coffee beans. (Please note: this product is unavailable for shipping during summer months).

7.5 oz. package. #SWT02 \$5.95

Containers shown not included with either product



Because SWT02 contains chocolate, it is more likely to melt in transit due to warm temperatures in summer. Customer assumes the risk if chocolate melts during transit.



"Prior to being hired at the Bean Project, my world looked pretty dark. Whenever I ran into almost any obstacle, I would fall back on substance abuse or other unproductive behaviors. Numerous family issues left me without any healthy guidance along the way and my problems never changed, they just got worse. Over time I lost my daughter and built up a lengthy list of felony convictions. I felt frustrated and didn't feel I had the skills and tools I needed to change. Since being hired at the Bean Project I have already felt a change. They really care and they expect us to care as well. I am working on my GED and have already begun to practice some newly gained life skills and job skills. Now that I'm here, it's made all the difference in how I see the world and how I see my future – and that all looks pretty bright."

Elizabeth



"I was living in a half way house with no stable job, no way to pay rent, no way to move past felony charges, no confidence. I learned about the Bean Project from my Probation Officer and was interested, but scared of change. Women's Bean Project provided me with stability, the ability to obtain housing, confidence and life skills to prepare me for a new chance in the world. I knew it was possible to move past my felony charges. The staff was encouraging and very supportive and I learned so much while at the Bean. Since graduating, I have been at the same employer for almost a year and have moved up to a management position due to the skills I learned at the Bean Project. Thank you!"

Katrina

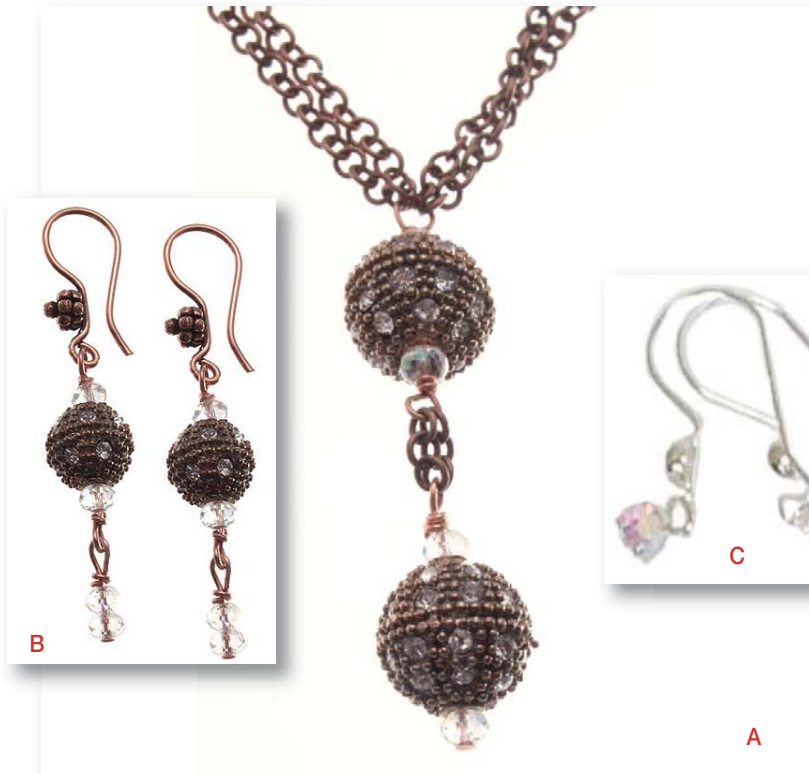
Lovingly Handmade Jewelry

When a woman thrives, we know we have made a difference.

Working in conjunction with female jewelry designers, Women's Bean Project program participants learn the basic skills of jewelry making to create these beautiful, limited-edition, handcrafted jewelry pieces. We carry a plethora of fashion necklaces, earrings and bracelets for everyday wear, professional wear, holiday glamour and casual occasions.

Women's Bean Project necklace and bracelet pieces are distinguished by a Bean Project sterling silver tag and all of our pieces are lovingly handmade by a woman in our program. Each piece comes beautifully packaged in a jewelry gift bag.

If you know of a store that you think should carry our products, please send us an email to info@womensbeanproject.com with the store name and location and we'll contact them.



A Glamour Necklace. \$20. Copper and rhinestones. 17 inches and 1 inch extension. **JWLN55**

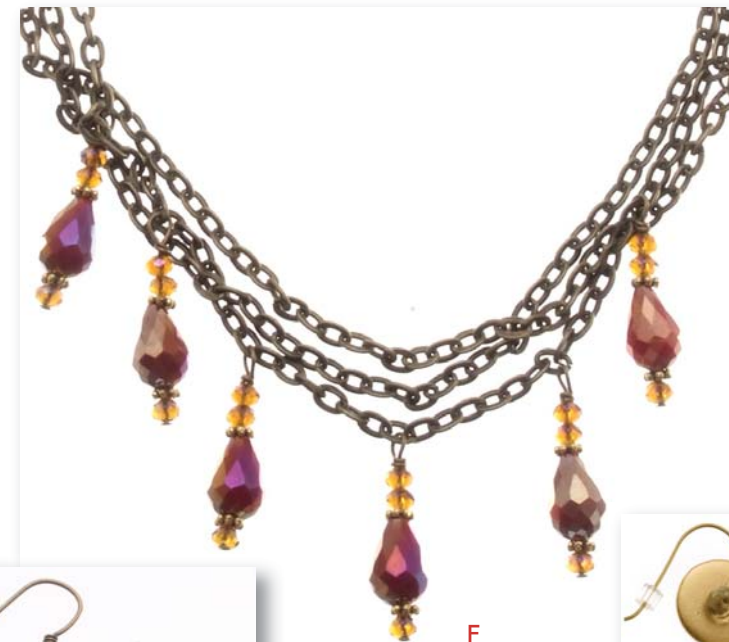
B Glamour Earrings. \$15. Copper and rhinestones. 2 inch drop. **JWLE20**

C Sparkle Earrings. \$18. Swarovski crystals. Sterling silver fishhook earwires. 1 inch. **JWLE41**

D Brilliance Necklace. \$25. Brushed sterling silver over copper and crystals. 17 inches. **JWLN54**



E Brilliance Earrings. \$15. Brushed sterling over copper. Sterling earwires with 1.75 inch drop. **JWLE24**



F Dramatic Effect Necklace. \$20. Triple brass chain, faceted crystals. 17 inches & 1.5 inch extension. **JWLN56**

G Dramatic Effect Earrings. \$15. Faceted crystals, brass earwires, 1.75 inch drop. **JWLE21**



H Goddess Earrings. \$7.50. Gold-painted South Sea wood rondelle with a silver-shade rondelle crystal in the center, Brass earwires. 3/4 inches. **JWLE07**



A Good Fortune Necklace. \$25. Sea green jade beads and 37.5 inches long. *JWLN41*



B Good Fortune Earrings. \$15. Sea green jade beads and sterling silver leverback ear wires. 2 inch drop. *JWLE09*



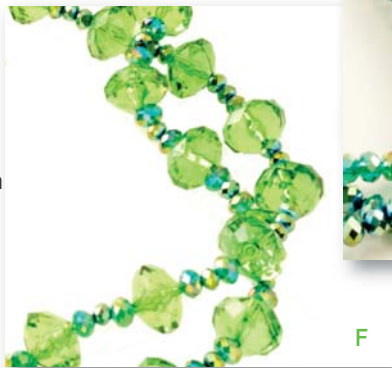
C Healing Waters Earrings. \$20. Lapis, quartzite and aventurine. Sterling silver ear wires. Hang 1.5 inches. *JWLE26*

D Healing Waters Necklace. \$30. Aventurine beads in an earthy green complemented by a flat round amazonite stone, a faceted pear-shaped quartzite stone and a tear-shaped lapis stone. Sterling silver filled toggle clasp, focal piece and sterling silver findings. 17 inches. *JWLN60*

E Green with Envy Bracelet. \$20. Three strand faceted crystals. 7 inches with 1 inch extension chain. *JWLB05*



F Green with Envy Necklace. \$28. Three strand acrylic beads and faceted crystals. 18 inches with 2 inch extension. *JWLN65*



G Playful Necklace. \$28. Sterling Silver chain and quartzite crystals. 17 and 1/2 inches. *JWLN42*

H Amazonite and Pearl Earrings. \$15. Flat round amazonite, Swarovski glass pearl. Sterling silver ear wires. 2 inch drop. *JWLE25*



I Charmed Necklace. \$25. Taviz quartz stones, Swiss blue quartz taviz, accented by a single, off-centered London blue quartz taviz. Sterling silver cable chain. 18 inches. *JLWN43*



J Simplicity Earrings. \$15. Sterling silver square and ear wires with quartzite crystals. Drop 1.5 inches. *JWLE10*



K Timeless Necklace. \$25. Round garnet beads interrupted by a one inch section of peridot-colored Swarovski crystals, peridot-colored pear-shaped hydroquartz. Sterling silver lobster clasp. 18 inches. *JWLN64*



L Timeless Earrings. \$18. Pear-shaped, peridot-colored quartzite center surrounded by a cluster of four garnet beads. Sterling silver ear wires. 1.5 inches. *JWLE27*

M Serenity Necklace. \$28. Sky blue Amazonite oval donuts, intricate chain of silver-plated oval and stainless steel with silver plating links spaces the Amazonite. 18 inches with a 2 inch sterling silver extension chain. *JWLN31*



N Bloom Earrings. \$7.50. Blue chalcedony crystal rondelles, antiqued brass ball, coil ear wires. 1.75 inches. *JWLE08*



O Individuality Necklace. \$25. Brushed sterling silver square, London blue cube quartz beads, Pyrite rondelle. Sterling silver lobster clasp and findings. Hangs 16 inches. *JWLN44*



P Peace Necklace. \$37.50. Turquoise-colored magnesite beads with a handmade chain, checkerboard-cut crystal. Silver lobster clasp. 24 inches. **JWLN84**



Q Peace Bracelet. \$18. Turquoise-colored magnesite beads with a handmade chain. Silver lobster clasp. 6.5 inches, extends to 7 inches. **JWLB13**



R Peace Earrings. \$24.50. Turquoise-colored magnesite bead, crystal teardrop. Sterling silver fishhook ear wires. 2 inches. **JWLE40**

S Not your Mother's Pearl Necklace. \$25. One strand has green aventurine stones punctuated with red coral beads, second strand has 4 mm class pearls with a short accent of red coral. Sterling silver filled toggle clasp. 17 inches. **JWLN62**



T Freedom Necklace. \$32.50. Cobalt blue glass seed beads, 1.5 inch silver pendant. Silver toggle clasp. 23 inches. **JWLN86**

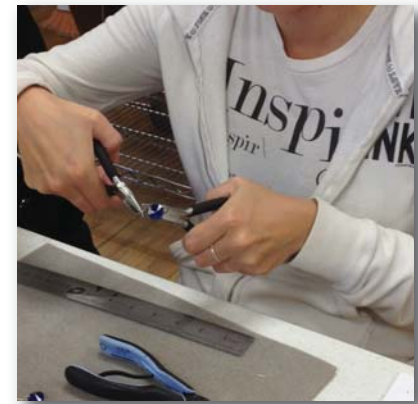
V Freedom Earrings. \$15. Cobalt blue crystal saucer accented with a silver teardrop bead. Sterling silver fishhook ear wires. 1.5 inches. **JWLE43**



U Freedom Bracelet. \$25. Cobalt blue glass seed bead, faceted crystal saucer. Silver toggle clasp. 7 inches. **JWLB15**



A Calculated Risk Necklace. \$22.50. Gold aluminum chain, night blue Swarovski glass pearls. 36 inches. **JWLN77**



B Soulshine Necklace. \$30. Brandy citrine rondelles set off-centered are graced with a hydroquartz citrine-colored stone in the middle. Sterling silver cable chain and lobster clasp. 18 inches. **JWLN48**



C Sea Change Earrings. \$20. Faceted topaz-colored, oval crystals. 1.25 inches. **JWLE36**



D Three Sisters Earrings. \$15. Faceted blue goldstone topped by four brandy citrine rondelles. Sterling silver French ear wires. 2 inches. **JWLE16**



E Full Circle Necklace. \$25. Golden aluminum big round links spaced with faceted Angelic crystals in light smoky topaz and linked together with glass seed beads in a light amber color. S-hook clasp. 39 inches. **JWLN34**

"In 2008, I was arrested for organized crime and was sentenced to prison for 8 years. After a few years in prison, I was transferred to a halfway house, found a job and was slowly recovering. Once released from the halfway house, everything began to go downhill. After five months, I began drinking and unfortunately lost my job and felt there was no positive direction in my life. It has been over a year and a half since I graduated from Women's Bean Project and what an amazing ride it has been! The job I took after graduation at Goodwill Industries has given me the opportunity to shine and progress into a management position. All the tools and classes that I received while employed at the Bean Project have allowed me to move up in the company and my mentor and staff were instrumental in helping guide me along the way." **Renee**





A Enchanted Necklace. \$30. Amethyst, hydroquartz and sterling silver chain. 17 inches. **JWLN51**



B Infinity Necklace. \$30. Sterling silver, rose quartz. 16 inches. **JWLN37**

C Infinity Earrings. \$12. Rose quartz, sterling silver ear wires. Drop 1.75 inches. **JWLE05**



D Regal Necklace. \$22.50. Howlite and copper. 15 inches with 3 inch extension. **JWLN58**



E Regal Earrings. \$15. Howlite and copper. 3 inch drop. **JWLE23**



F Cherish Earrings. \$15. Two stain-red, bi-cone crystals. Sterling silver ear wires. 1.25 inches. **JWLE22**



G Dream Catcher Necklace. \$25. Metallic coated beads, sterling silver focal piece. 17 inches. **JWLN61**



H Grace Necklace. \$30. Lucite pendant, lavender pearls, sterling silver chain. 17 inches. **JWLN25**



I Celebrate Necklace. \$35. Coral-colored magnesite beads, interspersed with chunky glass light purple beads, off-center is a coral-colored checkerboard cut crystal. Sterling silver spring clasp. 38 inches. **JWLN85**



J Celebrate Bracelet. \$18. Coral-colored magnesite beads, purple glass beads. Silver lobster clasp. 7 inches. **JWLB14**



K Celebrate Earrings. \$15. Coral-colored magnesite beads with two purple seed beads. Sterling silver fishhook ear wires. 1.5 inches. **JWLE42**



L Storm Necklace. \$20. Imitation hematite and bamboo coral. 31 inches. **JWLN74**

M Dreams Necklace. \$20. Silver plated brass and crystals. 39 inches. **JWLN32**



Inspire

Tell someone you know that they inspire you by giving them one of our Inspiration necklaces.

The women in the program inspire us every day and serve as the inspiration behind this line of jewelry. Two lead-free

pewter pendants hang from a delicate ball chain. Raised on the back of each pendant is the Bean Project logo. A crystal finishes off each necklace. Pendants and chain are manufactured in the USA. Each piece is lovingly handmade and is \$18.

Seven different words are available, each with a single (color bead) noted:

- ▼ Courage (Orange) **JWLN-INSPO1**
- ▼ Love (Red) **JWLN-INSPO2**
- ▼ Hope (Blue) **JWLN-INSPO3**
- ▼ Confidence (Yellow) **JWLN-INSPO4**
- ▼ Joy (Green) **JWLN-INSPO5**
- ▼ Greatness (Fuschia) **JWLN-INSPO6**
- ▼ Strength (Purple) **JWLN-INSPO7**





A Limitless Necklace. \$25. Black onyx beads, intricate copper wire beads. Silver plated toggle clasp. 36 inches. **JWLN81**



B Limitless Earrings. \$15. Intricate copper wire beads and sterling silver ear wires. 1.25 inches. **JWLE37**

C Confidence Necklace. \$20. Oval black wood beads spaced by clear Preciosa Czech fire-polished faceted rondelles. The focal point is a ball woven of black crystal rondelles. Antiqued silver pewter hook-and-eye clasp. 20 inches. **JWLN33**



D Foundation Necklace. \$18. Black chain decorated with 7 black onyx oval beads. Sterling silver clasp hand tarnished to complement the piece. 18 inches. **JWLN01**



E Continuum Necklace. \$35. Sterling silver, Swarovski glass pearls, nephrite. 17 inches. **JWLN46**



F Twilight Necklace. \$25. Blue goldstone, Swarovski glass pearls, sterling silver chain. 18 inches. **JWLN49**



H Twilight Earrings. \$15. Blue goldstone, Swarovski glass pearls, sterling silver ear wires. Drop 1.5 inches. **JWLE14**



G Continuum Earrings. \$15. Swarovski glass pearl, sterling silver ear wires. Drop 1.5 inches. **JWLE15**



I Center Stage Necklace. \$25. Onyx, jade and coral with sterling silver chain. 17 and 1/2 inches. **JWLN50**



J Center Stage Earrings. \$18. Swarovski glass pearl, jade, coral with sterling silver ear wires. 2 and 1/2 inch drop. **JWLE17**



K Queen of the Jungle. \$25. Black onyx and tiger's eye. 8mm round onyx beads have an off-center accent of oval tiger's eye beads. A 1.75 inch tiger's eye tear drop focal piece hangs from the center. 18 inches. **JWLN63**



L Midnight Pearl Necklace. \$25. Black onyx coin beads, midnight blue Swarovski glass pearls, Tahitian Swarovski glass pearls added as an accent. Sterling silver lobster clasp. 17 and 1/2 inches. **JWLN47**



M Little Black Earrings. \$15. Pyrite rondelle and black onyx teardrop beads, sterling silver french ear wires. 1.75 inches **JWLE12**



Jewelry designer, Franki Morales Cook (pictured right)

"I was in prison for 5 months after having my probation revoked in 2009. I then spent 2 years in a halfway house and the ladies in the halfway house recommended I consider Women's Bean Project where I could get a second chance. The Bean Project had everything I needed to change my life - structure, discipline and lots of resources that could help. They provided a place where I wanted to go to work and stay out of trouble. I liked everything about the program and now feel like a better person who is confident that I can achieve anything I put my mind to. I now have my own apartment and know I will be successful in life based on the skills I learned. My mentor also helped me in so many ways and I am thankful for the Bean Project."



Vonnie

WOMEN'S BEAN PROJECT

Help Your Business Thrive

Piece Work and Fulfillment Services

Help your business thrive by hiring Women's Bean Project for piece work and fulfillment services.

What if we could hire more women who are chronically unemployed and impoverished and help them move up the path toward personal and economic self-sufficiency while helping your business thrive? We Can.



Women's Bean Project operates a dry food manufacturing facility that is **ASI certified**. We have a handmade jewelry manufacturing business and have electronic order fulfillment capabilities.

- Light Assembly
- Order Processing
- Packaging & Labeling
- Order Fulfillment

creating a framework for success

Women's Bean Project is a social enterprise that has been employing chronically impoverished and unemployed women for 25 years through a transitional job in gourmet food and handcrafted jewelry manufacturing. Program participants receive immediate income and support services to overcome barriers to employment. They learn the basic job readiness, interpersonal and life skills needed to get and keep a job.

During her 9-months at the Bean Project, a woman moves out of dependency and into personal responsibility and self-reliance through a holistic approach that includes on-the-job training as well as stabilization and personal development services.

By hiring Women's Bean Project, you are helping women create a new future - for themselves, their families, our community and our economy.



5 ways Women's Bean Project can help your business

thrive

1 **Cut your costs and increase revenue.**
Save money on office and manufacturing space.

2 **We manage the employee.**
Save money on taxes and insurance.

3 **The work gets done.**
You tell us what you need and leave the rest to us.

4 **Your business thrives.**
You can focus on growing your business.

5 **You are contributing to a stronger community.**
When a woman thrives, our local economy gains.

"Before coming to Women's Bean Project I was stuck in a dead end job with no room for career advancement. I had just gotten out of the halfway house and also just had my baby girl. I am a mother of three boys and my daughter - and

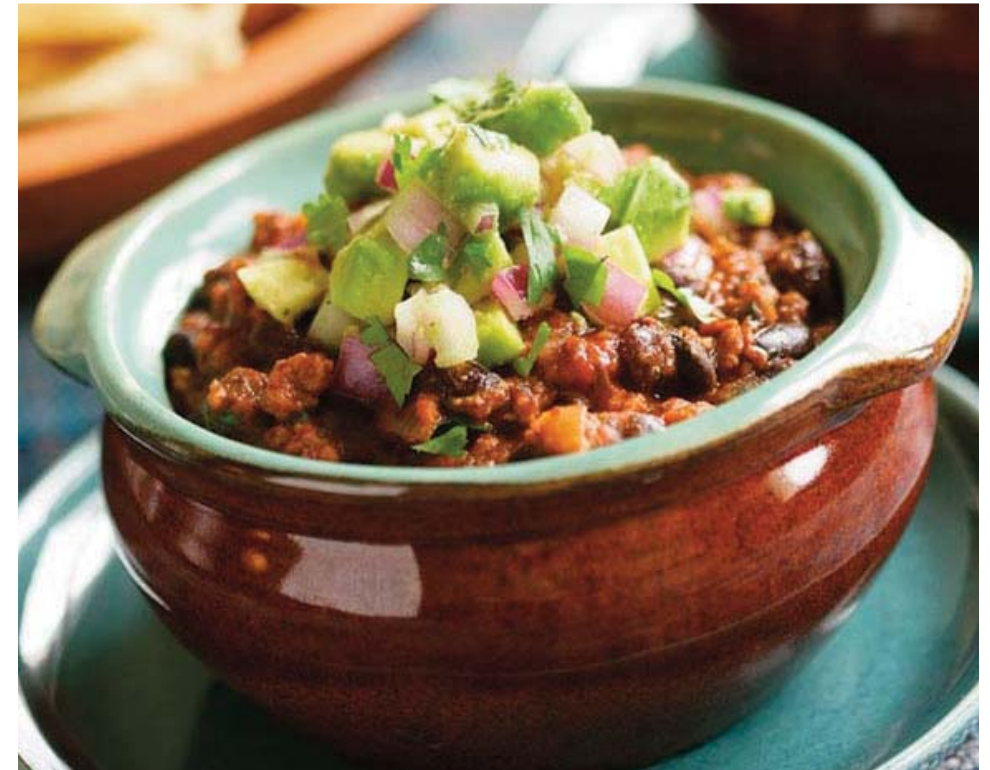


life for us was not heading in the right direction. Our future seemed stuck and it was starting to make me really worried. I was determined to make a change. Life was going to take me somewhere and it took me to the Bean Project. When I found out I was hired I felt really excited and relieved. I have learned so much since working at the Bean Project. The Bean has helped me with more than just job skills. My goals for the future are to graduate from college and own my own business or to work in human services. When I think of what's to come I get excited. I am in charge of my own destiny and I know I will never give up."

Shontale

From the Bean Kitchen

Black Bean Chili with Chipotle and Avacado



- 1 bag of Marian's Black Bean Soup Mix, rinse and drain beans
- 1 14-1/2-oz. can diced tomatoes
- 1 medium chipotle plus 2 tbsp adobo sauce (from a can of chipotles in adobo sauce)
- 2 tbsp extra-virgin olive oil
- 1 lb. 85% lean ground beef
- Kosher salt
- 1 large red onion, finely diced
- 1-1/2 tbsp chili powder
- 1 spice packet from Marian's Black Bean Soup Mix
- 1 lime, juiced
- 1/2 cup chopped fresh cilantro
- Freshly ground black pepper
- 1 ripe avocado, diced

To Prep Beans:

You can soak overnight or microwave for 15 minutes covered in water. Or you can use a pressure cooker and follow instructions for your cooker.

After beans are soft:

Put one-third of the beans into the bowl of a food processor, along with the tomatoes and their juices, chipotle, and adobo sauce. Process until smooth and set aside.

Heat the oil in a 5-to-6 quart Dutch oven or similar heavy-duty pot over medium-high heat until it's shimmering hot about 2 minutes. Add the beef, season with 1/2 tsp. salt and cook about 3 minutes. Remove beef with slotted spoon. Add half of the onion and 1/4 tsp. salt and cook, stirring until it begins to brown and soften, about 3 minutes. Lower the heat to medium. Add the chili powder and spice packet and stir. Add the remaining black beans, the puréed bean mixture and the beef to the pot and simmer for 15 minutes, stirring frequently. Add half of the lime juice, half of the cilantro, and salt and pepper to taste. If the chili is thicker than you like, it may be thinned with water.

Meanwhile, in a small bowl, mix the remaining lime juice and onion with the avocado. Season generously with salt and pepper. Serve the chili topped with the avocado mixture and remaining cilantro.

You could also use Firehouse#10 Chili Mix or Old Fashion Mild Chili instead of Black Bean Soup and OMIT adding chili powder (it's in the spice packet already).

Women's Bean Project Novelties

We have a variety of branded novelty items such as our aprons, tote bags and t-shirts. Whether you wear them yourself or give as a gift, you're helping spread the word about Women's Bean Project and the work we're doing in our community.

We also have beautiful soup bowls and mugs that have been lovingly handpainted by our Program Participants. Consider adding one of our soups, coffees or baking items for a nice gift giving addition.

Women's Bean Project Logo Apron

Our logo apron is made of cotton blend and includes an adjustable neck strap and three front pockets. Color: Light taupe with forest green logo. **#STUFF01** \$17.95

Women's Bean Project Tote Bags

Carry the message everywhere with this handy, sturdy, 100% cotton canvas tote bag. Contrasting 22-inch, forest green handles and three-inch bottom gusset. 15"W x 14 1/2"H x 3"D. **#STUFF03** \$17.95



Women's Bean Project Ringer T-shirt

100% cotton classic ringer T-shirt with ivy green trim and imprint. Sizes: Small: **#STUFF02**, Medium: **#STUFF06**, Large: **#STUFF07**, XLarge: **#STUFF08**, XXLarge: **#STUFF09**. All sizes \$14.95 each.



Dog Biscuits

Send a treat to Fido when you're treating his owners. Made by our friends at Lamb's Farm, a social enterprise in Libertyville, IL. Chicken and Cheese flavored. All natural. 5 oz. package. **#STUFF14** \$4.95

Handpainted Soup Bowls and Mugs

These simple ceramic soup bowls and mugs are lovingly handpainted by Program Participants. Food safe glaze. Dishwasher safe. Not microwave safe. **#STUFF04** \$5.95 (soup bowls) **#STUFF05** \$5.95 (mugs)

From the Bean Kitchen

Whether you're looking for a delicious dinner, comfort food, gluten-free options, or a warm-you-up dessert, our products will please any palate.



Chicken Tortilla Soup

- 1 Package of Toni's 10 Bean Soup
- 2 cans chicken broth
- 2 small cans chopped green chilies
- 1 (14.5 oz.) can fire roasted diced tomatoes
- 1 teaspoon dried oregano
- 1 cup roughly chopped fresh cilantro leaves
- 3 cloves garlic, chopped
- 3 to 4 cups cooked chicken, diced
- 1 medium diced onion
- 1 teaspoon ground cumin
- Dash ground cloves
- Salt and freshly ground pepper
- Water

Wash and drain beans. Soak beans overnight (or as instructed on the package), combine everything in a large soup pot, bring to a boil, reduce and simmer for 2 to 3 hours. Add cilantro leaves and garnish with Monterrey cheese and grilled tortilla strips.

Serve and enjoy!

Women's Bean Project

Where to find us.

Our products are sold through more than 500 stores nationwide, some of the country's largest online retailers such as Walmart.com, Amazon.com and Overstock.com and shopping online or in our retail store at Women's Bean Project, as well as Colorado King Soopers and Safeway stores. Visit our website for retail partners by state.

Visit our Retail Store

Denver Fire Department Old Firehouse #10 • 3201 Curtis St. • Denver, CO 80205 • Monday through Friday 8:00 a.m. to 4:30 p.m. If you don't see us at your local store, please ask the manager to check into carrying Women's Bean Project products.

Donate

Please consider making a financial donation to support the transformative program offered at Women's Bean Project. Income earned from product sales generates approximately 70% of our operating revenue, with the remainder coming from foundations, individual donors, grants, corporations and other organizations. Your donation enables Women's Bean Project to maintain the high level of service and innovative programs for the 60 women we serve each year - like the life skills and interpersonal skills classes and one-on-one mentoring and coaching we offer as a part of each woman's employment.

Your gift to Women's Bean Project, in conjunction with your purchases, is the ultimate way to help a woman earn her future.

To make Women's Bean Project a part of your estate planning, use Tax ID# 8401144973 in your planning documents. You can also visit our website at www.womensbeanproject.com or call 303.292.1919 ext. 113 for more information.

To make a donation, contact us:

On the internet: www.womensbeanproject.com

By Phone: 303.292.1919 ext. 113 or toll free at 888.292.3001

By Email: info@womensbeanproject.com

U.S. Mail: Women's Bean Project • 3201 Curtis St. Denver, CO 80205

